

WALL-RECESSED ELECTRONIC MONOBLOCK TAP EXCELLENCE



SPACE

Features:

- Wall-recessed 3 part electronic tap in a single monoblock compartment for washbasins with square spout, square mixer and square electronic circuit featured in 3 external cover plates
- Heavy duty
- Two (SPACE B-E model) or three (SPACE B/M-E model) frontal covers in 70x70x3mm polished and chromed solid brass, secured with no visible screws
- Mixer in solid brass with ceramic disk cartridge and square knob 45x45x15mm in polished and chromed brass (SPACE B/M-E model only)
- Electronic circuit, solenoid valve, mixer and check valves if present, filters and hydraulic part assembled and connected in a AISI 304 compartment of stainless steel 1 mm-thick box
- The stainless steel box has to be wall-inserted. At the end of installation only the cover plates will be visible. Removing the plates creates access to the interior functional parts of the tap
- The electronic circuit is inserted in the lower part of the monoblock compartment, in the middle the spout with the solenoid valve, and in the upper the mixer if is present.
- Spout with aerator flush-mounted in two different sizes: 150 mm or 200 mm long
- Automatic flow regulator: 5-6 l/min
- Infrared electronic circuit with built-in automatic shutoff system
- Equipped with safety transformer
- CE certified

Technical Specifications:

- Operating pressure: 1 - 10 bar
- Water flow: 5/6 l/min
- Supply: Transformer 230/12Vca 6VA Class II IP65

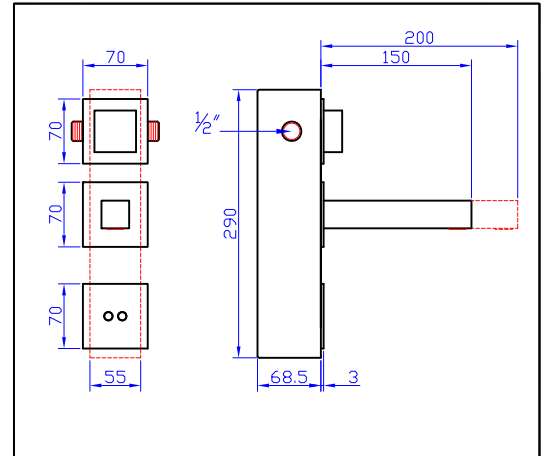
Operational functions:

- Opening: Immediately with the detection of the hands
- Closing: 1 second after the detection is terminated or after 60 seconds of continuous operation (anti-flooding system)

WALL-RECESSED ELECTRONIC MONOBLOCK TAP EXCELLENCE

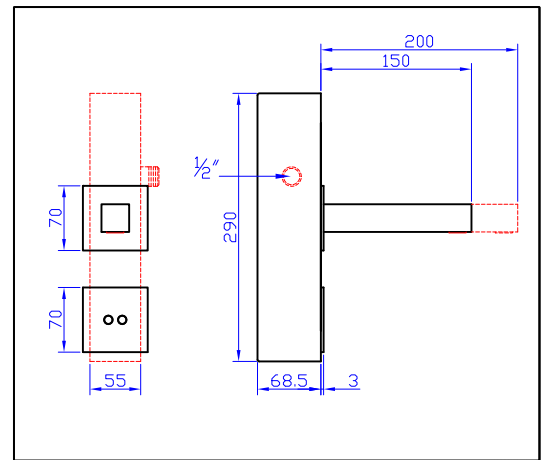
SPACE B/MT-E

Flush-mounted electronic tap with mixer, one square spout and three square plates. . Hydraulic part in solid brass and chrome-plated spout made out of a full 30x30mm bar with flush-mounted aerator.
Total length of the spout: 150 mm [200mm]. Ceramic disk mixer with square knob in chrome-plated solid brass.
Outer plates in chrome-plated polished solid brass to be fixed with hidden screws. Size: 70x70x3mm.
Pre-assembled box in 1mm-thick stainless steel (size 290x70x68.5 mm) to be flush-mounted housing a mixer with filters and check valves in the upper part, a solenoid valve with a 5/6 l/min flow regulator and a spout fixer in the middle and an infrared electronic circuit with automatic shutoff system in the lower part.
Equipped with a 230/12Vac safety transformer Class II IP65.
CE certified.



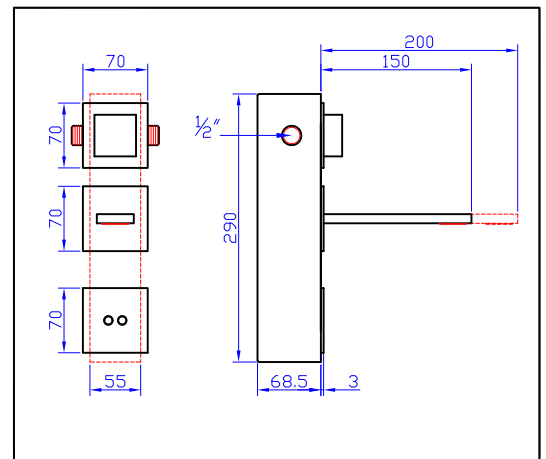
SPACE B/T-E

Flush-mounted electronic tap with one square spout and two square plates. . Hydraulic part in solid brass and chrome-plated spout made out of a full 30x30mm bar with flush-mounted aerator.
Total length of the spout: 150 mm [200mm]. Outer plates in chrome-plated polished solid brass to be fixed with hidden screws. Size: 70x70x3mm.
Pre-assembled box in 1mm-thick stainless steel (size 290x70x68.5 mm) to be flush-mounted housing a solenoid valve with a 5/6 l/min flow regulator and a spout fixer in the upper part and an infrared electronic circuit with automatic shutoff system in the lower part.
Equipped with a 230/12Vac safety transformer Class II IP65.
CE certified.



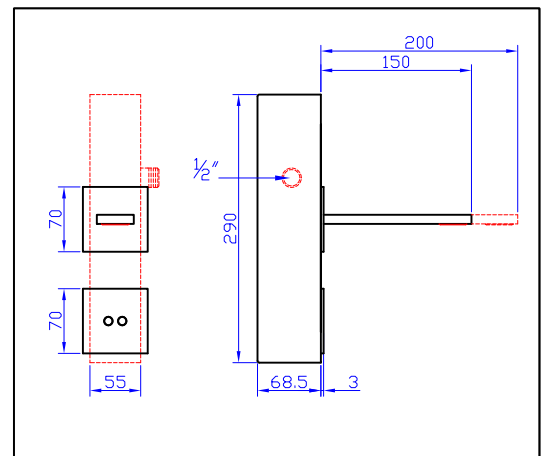
SPACE C/MT-E

Flush-mounted electronic tap with mixer, one rectangular spout and three square plates. . Hydraulic part in solid brass and chrome-plated spout made out of a full 10x40mm bar with flush-mounted aerator.
Total length of the spout: 150 mm [200mm]. Ceramic disk mixer with square knob in chrome-plated solid brass.
Outer plates in chrome-plated polished solid brass to be fixed with hidden screws. Size: 70x70x3mm.
Pre-assembled box in 1mm-thick stainless steel (size 290x70x68.5 mm) to be flush-mounted housing a mixer with filters and check valves in the upper part, a solenoid valve with a 5/6 l/min flow regulator and a spout fixer in the middle and an infrared electronic circuit with automatic shutoff system in the lower part.
Equipped with a 230/12Vac safety transformer Class II IP65. CE certified



SPACE C/T-E

Flush-mounted electronic tap with one rectangular spout and two square plates. Hydraulic part in solid brass and chrome-plated spout made out of a full 10x40mm bar with flush-mounted aerator.
Total length of the spout: 150 mm [200mm]. Outer plates in chrome-plated polished solid brass to be fixed with hidden screws. Size: 70x70x3mm.
Pre-assembled box in 1mm-thick stainless steel (size 290x70x68.5 mm) to be flush-mounted housing a solenoid valve with a 5/6 l/min flow regulator and a spout fixer in the upper part and an infrared electronic circuit with automatic shutoff system in the lower part.
Equipped with a 230/12Vac safety transformer Class II IP65.
CE certified.



WALL-RECESSED ELECTRONIC MONOBLOCK TAP EXCELLENCE

SPACE D/MT-E

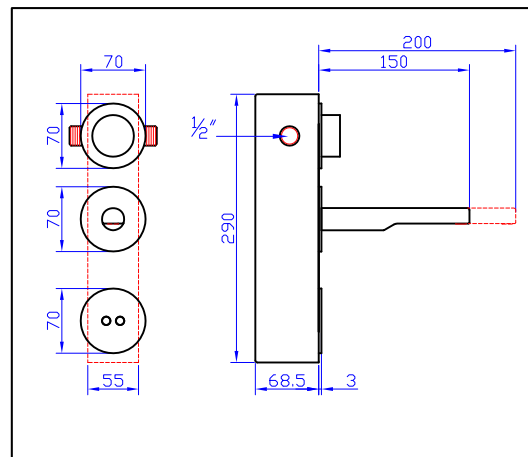
Flush-mounted electronic tap with mixer, one round spout and three round plates.
Hydraulic part in solid brass and chrome-plated spout made out of a full $\varnothing 24$ mm bar with flush-mounted aerator.

Total length of the spout: 150 mm [200mm]. Ceramic disk mixer with round knob in chrome-plated solid brass.

Outer plates in chrome-plated polished solid brass to be fixed with hidden screws. Size: $\varnothing 70 \times 3$ mm. Pre-assembled box in 1mm-thick stainless steel (size 290x70x68.5 mm) to be flush-mounted housing a mixer with filters and check valves in the upper part, a solenoid valve with a 5/6 l/min flow regulator and a spout fixer in the middle and an infrared electronic system with automatic shutoff system in the lower part.

Equipped with a 230/12Vac safety transformer Class II IP65.

CE certified.



SPACE D/T-E

Flush-mounted electronic tap with one round spout and two round plates. .

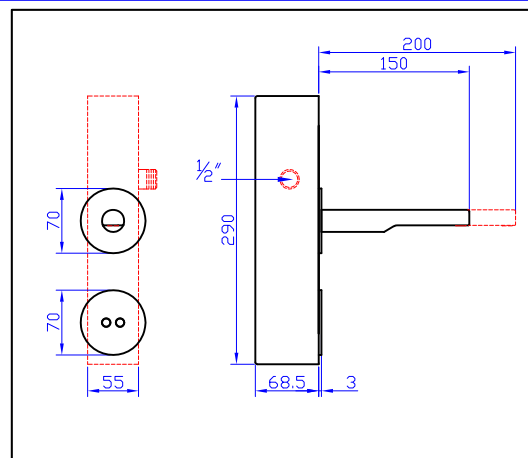
Hydraulic part in solid brass and chrome-plated spout made out of a full $\varnothing 24$ mm bar with flush-mounted aerator.

Total length of the spout: 150 mm [200mm]. Outer plates in chrome-plated polished solid brass to be fixed with hidden screws. Size: $\varnothing 70 \times 3$ mm.

Pre-assembled box in 1mm-thick stainless steel (size 290x70x68.5 mm) to be flush-mounted housing a solenoid valve with a 5/6 l/min flow regulator and a spout fixer in the upper part and an infrared electronic circuit with automatic shutoff system in the lower part.

Equipped with a 230/12Vac safety transformer Class II IP65.

CE certified.



SPACE F/MT-E

Flush-mounted electronic tap with mixer, one curved round spout and three round plates.

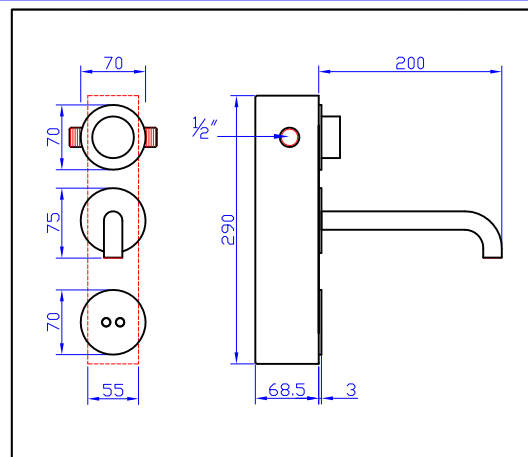
Hydraulic part in solid brass and chrome-plated curved spout made out of a full $\varnothing 20$ mm bar with flush-mounted aerator.

Total length of the spout: 195 mm. Ceramic disk mixer with round knob in chrome-plated solid brass.

Outer plates in chrome-plated polished solid brass to be fixed with hidden screws. Size: $\varnothing 70 \times 3$ mm. Pre-assembled box in 1mm-thick stainless steel (size 290x70x68.5 mm) to be flush-mounted housing a mixer with filters and check valves in the upper part, a solenoid valve with a 5/6 l/min flow regulator and a spout fixer in the middle and an infrared electronic circuit with automatic shutoff system in the lower part.

Equipped with a 230/12Vac safety transformer Class II IP65.

CE certified.



SPACE F/T-E

Flush-mounted electronic tap with one curved round spout and two round plates.

Hydraulic part in solid brass and chrome-plated curved spout made out of a full $\varnothing 20$ mm bar with flush-mounted aerator.

Total length of the spout: 195 mm. Outer plates in chrome-plated polished solid brass to be fixed with hidden screws. Size: $\varnothing 70 \times 3$ mm.

Pre-assembled box in 1mm-thick stainless steel (size 290x70x68.5 mm) to be flush-mounted housing a solenoid valve with a 5/6 l/min flow regulator and a spout fixer in the upper part and an infrared electronic circuit with automatic shutoff system in the lower part.

Equipped with a 230/12Vac safety transformer Class II IP65.

CE certified.

