

TECHNICAL DESCRIPTION

ID (Digital Identity), linear, sturdy and easy to install; thanks to sinuous lines and an unmistakable style manage, make every space unique.
Made with 14mm thick hpl panels, with smoothed edges and rounded corners is made in different color combinations, all enhanced by the depth of the texture created on the pilasters.
The hardware is made of anodized aluminum (6060 T5).
Doors are equipped with self-approaching hinges with adjustable spacer, soft-close system via damper piston, flush recessed lock in AISI 316 stainless steel with free/engaged indicator and integrated emergency opening, vandal-proof solid round lever (inside).
The 200mm high anodized aluminum (6060 T5) feet are adjustable in height and have a diameter of 65mm.
The upper stabilizing bar, also in aluminum has a groove to incorporate the pilasters, giving strength to the overall.
The height of the boxes is 2100mm from the floor to the top of the chain.

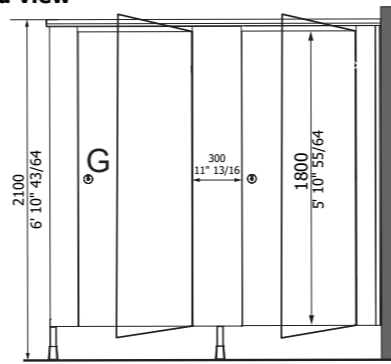


DIGITAL IDENTITY - External view

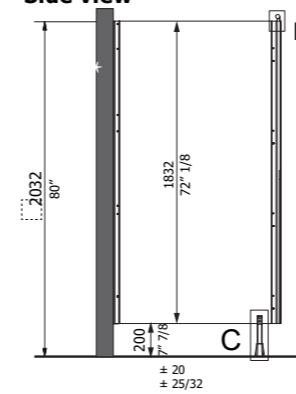


Technical drawings (mm / inch)

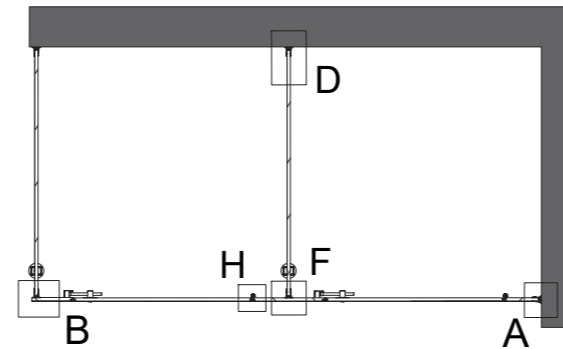
Standard view



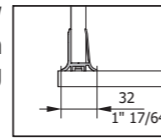
Side view



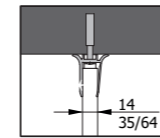
Plan



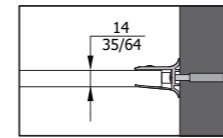
B. Frontal part/
side partition
fixing



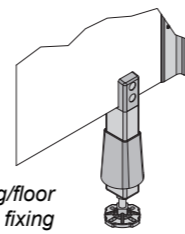
D. Partition/back wall
fixing.



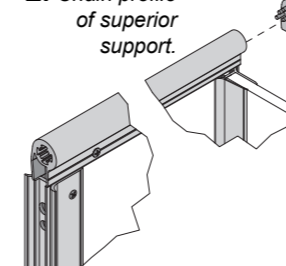
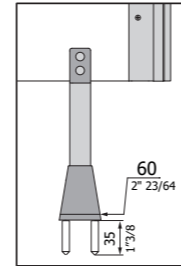
A. Frontal part/wall fixing.



C. Leg/floor
fixing



E. Chain profile
of superior
support.



General characteristics

Cubicles in HPL and aluminum profiles with a standard height of 2100mm.

Technical features

- Cubicles made of 14mm thick HPL stratified laminate with "scratch-proof" finish, smoothed edges and rounded corners.
- Shaped and pre-printed panels with standard graphics.
- Vertical aluminum profiles and silver anodized visible chain enclose and fix on the thickness of the 14mm HPL panels.
- Standard feet height 200mm, diameter 60mm. Aluminum feet adjustable by steel pin with nylon base.
- Doors with self-approaching hinges with adjustable spacer, soft-close system, recessed flush lock in AISI 316 stainless steel with indicator free/engaged and integrated emergency opening, vandal-proof solid round lever (inside).
- Possibility of arranging the partitions for the assembly of accessories (coat hangers, dispenser/toilet paper...).
- Standard colors in the catalog or special colors on request, subject to feasibility by the company.

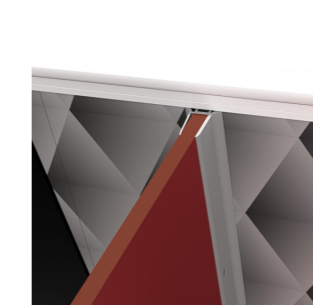
Options:

- Remotely visible LED free/busy indicator built into the lock, powered by battery (approximately 3 years life): box free=led off/box occupied=red led flashing.
- Profiles: titanium anodized or RAL painted with epoxy powder paints.
- Box height from the ground less than 200mm.
- Custom and non-coplanar box widths and depths.
- Shaped walls without graphics.
- Pictograms on the doors (engraved or adhesive).
- Doors (alternatively to pilasters) pre-printed with a "standard" texture.
- Digital printing on demand with customer supplied file (100dpi).

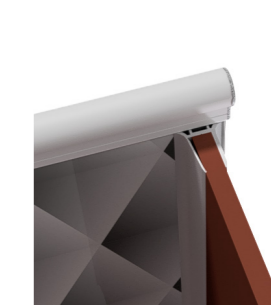
DIGITAL IDENTITY - Inside view



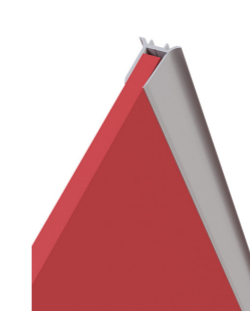
Frontal part/partition fixing (F).



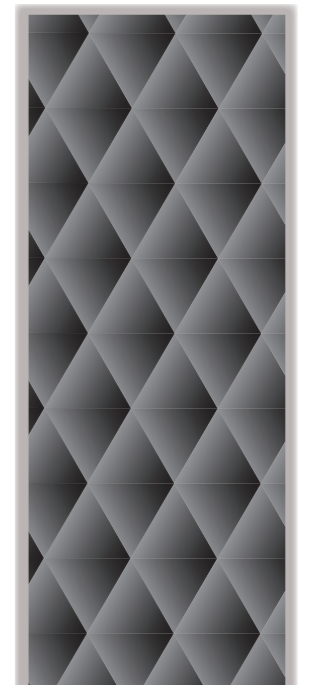
Frontal part/side partition fixing (B).



Partition/back wall fixing (D).



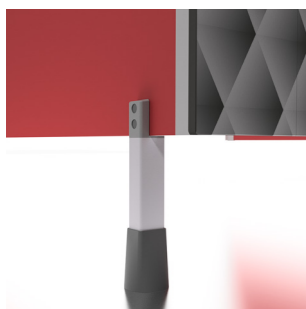
Lever lock (internal view G).



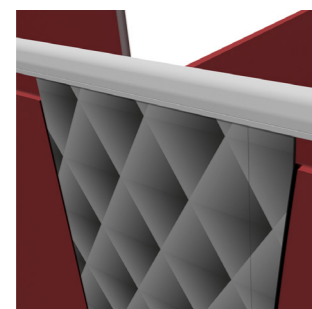
Digitized graphic STANDARD

**For further details, please see Products Catalogue.

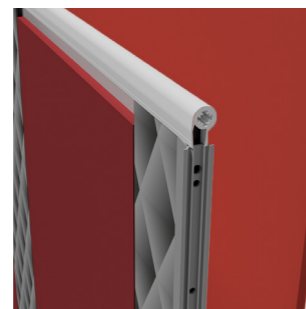
Leg/floor fixing (C).



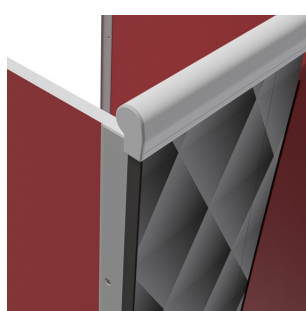
Frontal part/partition fixing (F).



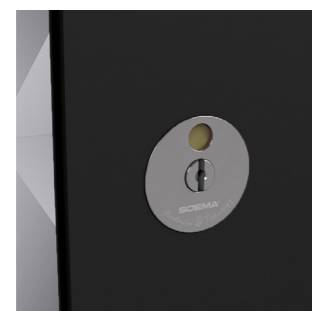
Frontal part/wall fixing (A).



Frontal part/side partition fixing (B).



Lever lock (external view G).



Hinge with shock absorber



*The structure hosting box installation, if necessary, should be adequately reinforced